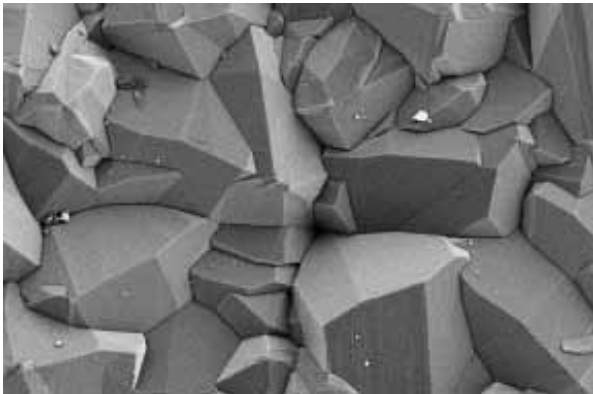


DURATOMIC® COATING

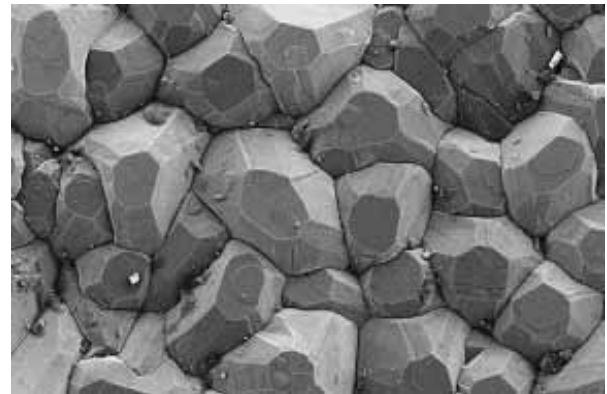
DURATOMIC FEATURES



CONVENTIONAL COATING SURFACE

(at High Magnification)

NOTE: ROUGH SURFACE



DURATOMIC COATING SURFACE

(at High Magnification)

NOTE: FLAT FACETS ON SURFACE

The flat facets on the Duratomic prevent built up edge and improve surface finish. These benefits are particularly important in stainless steel machining.



The hardness and toughness of the Duratomic coating dramatically reduce insert wear.