

SECO-CAPTO™



TOOLHOLDING FOR MAZAK MACHINES

OUR EXTENSIVE RANGE

Seco Tools are very pleased to launch its first Seco-Capto™ tool holding catalogue.

We have worked in close partnership with Craftsman Tools to develop the Seco-Capto™ quick change toolholders featured in this catalogue.

Together we have developed a wide variety of model specific clamping units for most Mazak machine tools. Alongside the standard Seco-Capto™ range, Craftsman Tools and Seco Tools can also jointly design and manufacture a number of innovative products and special applications for Mazak machines.

In addition to the Seco-Capto™ toolholders we can also offer the following complementary products:



Driven Units

Driven Seco-Capto™ Units

Reduce your set-up times and improve your surface finishing with our range of power driven holders. Seco-Capto's™ fully sealed units operate at speeds up to 6000 rpm. Induction hardened gears and high quality bearings ensure smooth and accurate operation with through coolant as an option.

Integrated Seco-Capto™ Turrets

Integrated Turrets offer increased rigidity, rapid tool change, larger work envelope, quicker set-up times, off-line tool setting and through-tool coolant to every station.

Options include turrets with two clamping stations at each position, and we have developed a range of accessories to increase the versatility of the turrets.

Integrated Turrets



Presetters



Seco-Capto™ Presetters

Reduce downtime with precision off-line tool setting.

Special Applications

Craftsman Tools design and manufacture one-off Seco-Capto™ toolholders to meet specific customer requirements.

Split Boring Bar Holders & Sleeves

Benefits of our Split and Hinged Boring Bar Holders include:

- Compatibility with both anti-vibration and standard boring bars
- Clamping length 4 x bar diameter
- Deeper boring capability (up to 10 times diameter)

Seco-Capto™ Toolholders for all leading machines.



- Increased cutting performance
- Through coolant capability

We also offer Split Reduction Sleeves for use with smaller diameter boring bars.

Our product range is always expanding. If you can't see the toolholder you need in this catalogue, contact your local Seco Representative to discuss your requirements.

Split Boring Bar Holders & Sleeves



**CRAFTSMAN
TOOLS**

Collaborating with the World's Finest

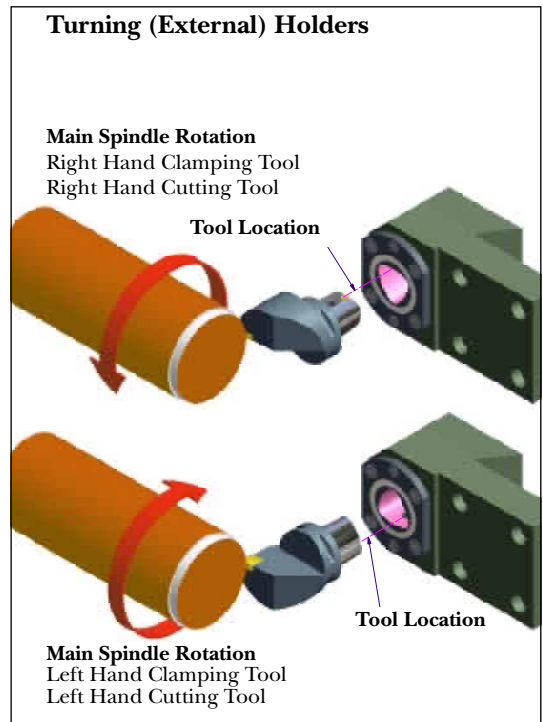
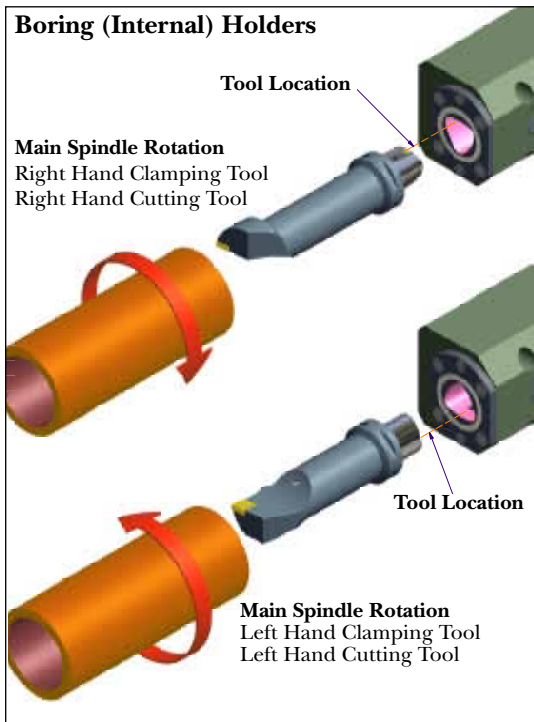
HOW TO USE THIS CATALOGUE

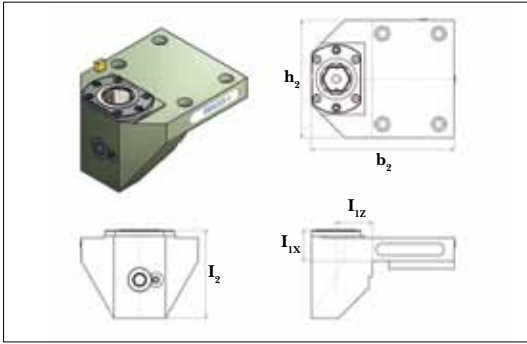
- Find your Mazak machine in the **tables** on pages 8-12, select the toolholder style and option you require (*e.g. Boring Holder, C4*) and note the *Product Code*.
- Check your requirements against the **type** diagrams shown on pages 5-7.
- Select the **Direction of Rotation** required using the illustrations below and replace * in the *Product Code* with **R** or **L**.

Please note that type diagrams and tables for **Presetters** can be found on page 12 and for split boring bar holders with reduction sleeve assemblies on page 13 - 14.

The information in this catalogue is correct at the time of going to press and is subject to change.

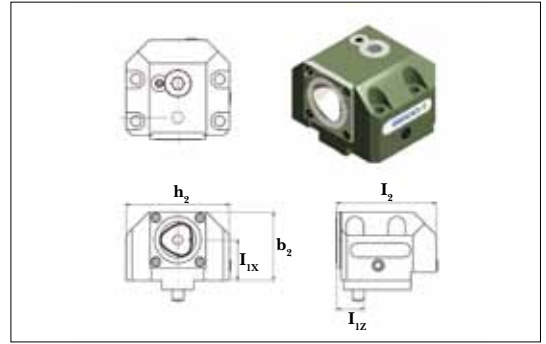
Direction of Rotation: Please specify Right (R) or Left (L) direction of rotation





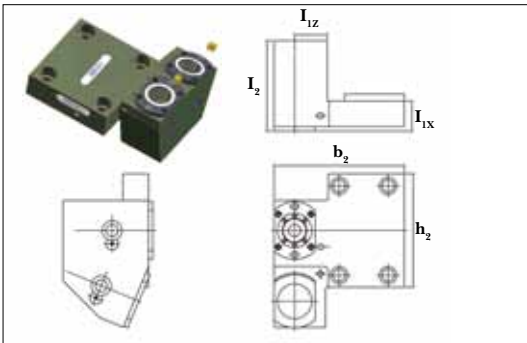
Type 1: Turning Holder

Page 8-9, 11



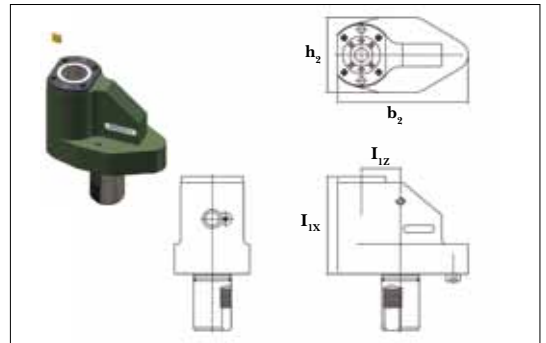
Type 2: Boring Holder

Page 8-9, 11,12



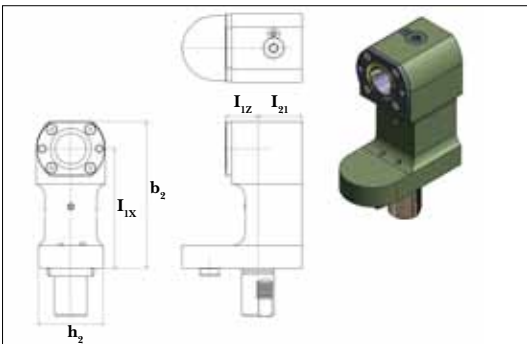
Type 3: Turning Holder

Page 8



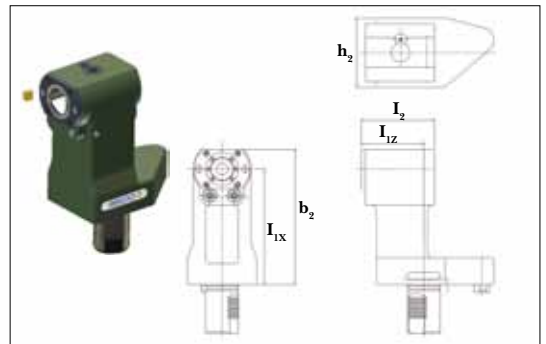
Type 4: Turning Holder

Page 9-11



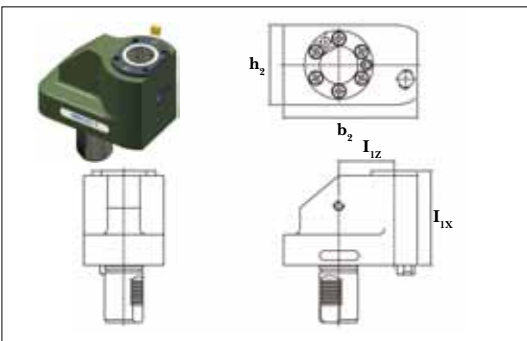
Type 5: Boring Holder

Page 10-12



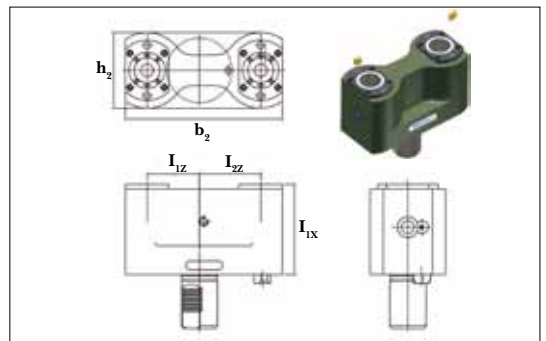
Type 6: Boring Holder

Page 9-10



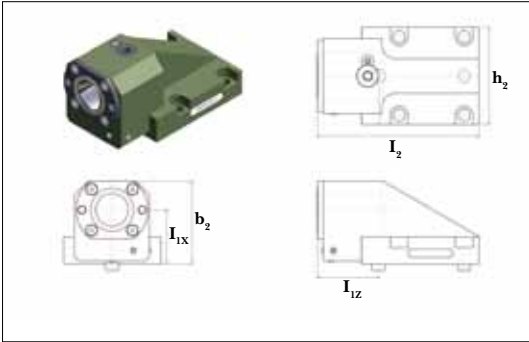
Type 7: Turning Holder

Page 9-12



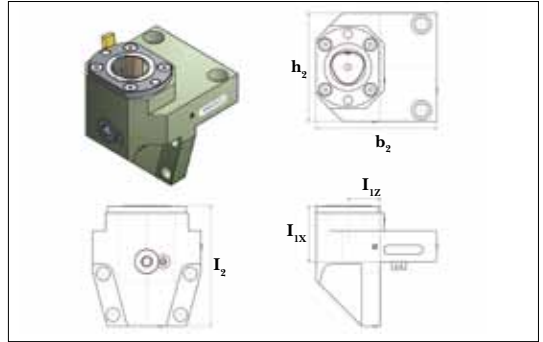
Type 8: Double turning Holder

Page 10



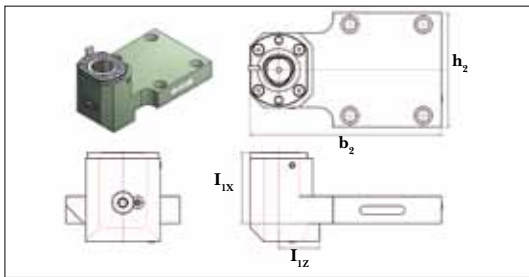
Type 9: Boring Holder

Page 11



Type 10: Turning Holder

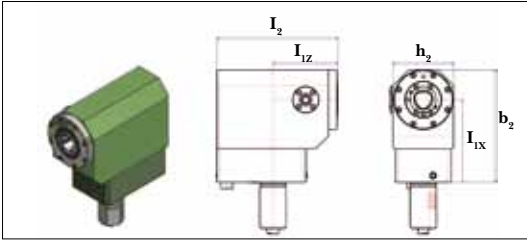
Page 11



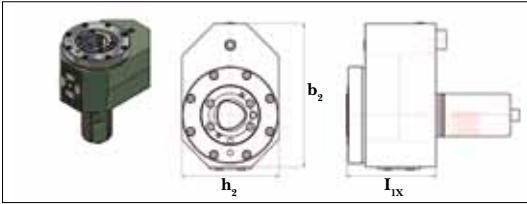
Type 11: Turning Holder

Page 9

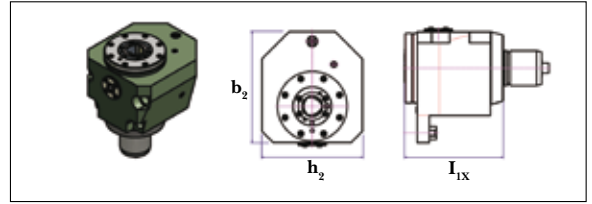




H-Type Driven Holder



V-Type (1) Driven Holder



V-Type (2) Driven Holder

Driven Holders

Product Code	Size	Dimensions (mm)					Type
		b ₂	h ₂	l _{1x}	l _{1z}	l ₂	
SQT 15, 18, 200M, 250M, 12 Station 12 Position; QT Nexus 200, 250M/MS/MSY							
MZK8790	C4	133	90	83			V(1)
MZK8792	C4	170	92	125	96	183	H
SQT 28, 30, 300M/MY; QT Nexus 300M/MY, 350M/MY, 400M, 450M							
MZK9113	C5	191	112	118			V(1)
MZK9114	C5	216	112	160	87	169	H
Multiplex 620, 6200							
MZK9111	C4	133	90	83			V(1)
MZK9112	C4	170	92	125	96	183	H
Multiplex 630, 6300							
MZK8801	C5	191	112	118			V(1)
MZK8800	C5	231	112	175	87	169	H
Cybertech Turn 4500M							
MZK8633	C5	164	142	162			V(2)
MZK8653	C4	165	144	141			V(2)

Part	Product Code	Size	Dimensions (mm)					Type
			b ₂	h ₂	l _{1x}	l _{1z}	l ₂	
Quick Turn 8, 10 - 8 Station 8 Position								
Turning Holder	C3-*CE-QT10-030026M	C3	148	119	33	38	94	1
Boring Bar Holder	C3-*CI-QT10-025020M	C3	62	114	30	15	83	2
Turning Holder - Limited capacity	C4-*CE-QT10-035027M	C4	154	114	32	42	106	1
Turning Holder - Extra capacity	C4-*CE-QT10-055000M	C4	148	95		55	90	1
Boring Bar Holder	C4-*CI-QT10-025033M	C4	49	95	25	33	88	2
QT Nexus 100 II series; QT Smart 100S; SQT200, 250								
Turning Holder	C4-*CE-QTN100-058005M	C4	165	95	5	58	136	1
Boring Bar Holder	C4-*CE-QTN100-058005M	C4	54	95	30	21	80	2
Boring Bar Holder	C6-*CI-QTN200-038024	C6	80	114	38	24	124	2
Quick Turn 15, 18, 20, 200; Dual Turn 20 8 Station 8 Position; QT Nexus 150, 200, 250, 300, 350; SQT 200, 250 - 12 Station 12 Position								
Turning Holder	C4-*CE-QT18-035030M	C4	139	95	30	35	84	1
Boring Bar Holder	C4-*CI-QT18-050025M	C4	74	114	50	25	100	2
Boring Bar Holder	C5-*CI-QT18-050028M	C5	82	114	50	28	100	2
Turning Holder - Extra capacity	C5-*CE-QTN200-060020M	C5	192	114	20	60	113	1
Boring Bar Holder - Extended	C5-*CI-QTN200-050080M	C5	82	114	50		152	2
QT Nexus 400, 450; Megaturn Nexus 900								
Boring Bar Holder	C5-*CI-QTN400-050025	C5	82	144	50	25	143	2
Turning Holder	C5-*CE-QTN400-035033	C5	208	144	33	35	98	1
Boring Bar Holder	C6-*CI-QTN400-050036	C6	92	144	50	36	149	2
Turning Holder	C6-*CE-QTN400-050028	C6	232	144	28	50	104	1
Quick Turn 18, 20 - 8 Station 16 Position								
Boring Bar Holder	C4-*CI-QT20-050025M	C4	74	119	50	25	100	2
Turning Holder	C4-*CE-QT20-035030M	C4	139	114	30	35	86	1
Boring Bar Holder	C5-*CI-QT20-050028M	C5	82	119	50	28	103	2
Quick Turn 200C - 12 Station 12 Position								
Turning Holder	C4-*CE-QT200-035030M	C4	139	95	30	35	90	1
Boring Bar Holder	C4-*CI-QT200-030030M	C4	54	95	30	30	91	2
Quick Turn 28, 30 - 8 Station 16 Position								
Tandem Turning Holder	C4-*CE-QT30-038035M TT	C4	152	132	35	38	105	3
Boring Bar Holder	C4-*CI-QT30-055030M	C4	79	132	55	30	117	2
Turning Holder	C4-*CE-QT30-038035M	C4	152	132	35	38	88	1
Turning Holder	C5-*CE-QT30-045038M	C5	167	132	38	45	103	1

Part	Product Code	Size	Dimensions (mm)					Type
			b ₂	h ₂	l _{1x}	l _{1z}	l ₂	
Boring Bar Holder	C5-*CI-QT30-055032M	C5	87	132	55	32	111	2
Quick Turn 35, 40 - 12 Station 24 Position								
Tandem Turning Holder	C4-*CE-QT40-038050M TT	C4	183	126	50	38	100	1
Turning Holder	C5-*CE-QT40-044045M	C5	197	126	45	44	103	1
Boring Bar Holder	C5-*CI-QT40-050038M	C5	82	126	50	38	138	2
Turning Holder	C6-*CE-QT40-074030M	C6	216	126	30	74	119	1
Boring Bar Holder	C6-*CI-QT40-050056M	C6	92	126	50	56	156	2
Quick Turn 350 - 12 Station								
Turning Holder	C5-*CE-QT350-044031M	C5	197	126	31	44	103	1
Slant Turn 50 (Metric)								
Turning Holder	C5-*CE-ST50-017095M Metric	C5	222	144	95	17	105	1
Boring Bar Holder	C5-*CI-ST50-080045M Metric	C5	112	144	80	45	170	2
Turning Holder	C6-*CE-ST50-042075M Metric	C6	237	144	75	90	120	1
Boring Bar Holder	C6-*CI-ST50-080046M Metric	C6	122	144	80	46	171	2
Boring Bar Holder	C8-*CI-ST50-080064M Metric	C8	130	144	80	64	189	2
Slant Turn 60, 80 - 15 Position (Metric)								
Turning Holder	C5-*CE-ST60-050050M Metric	C5	262	168	50	50	118	1
Boring Bar Holder	C6-*CI-ST60-100071M Metric	C6	87	132	55		111	2
Boring Bar Holder	C5-*CI-ST60-100070M Metric	C5	132	168	100	70	205	2
Turning Holder	C6-*CE-ST60-050105M Metric	C6	285	168	105	60		11
Boring Bar Holder	C8-*CI-ST60-100074M Metric	C8	150	168	100	74	209	2
Slant Turn 450 - 12 Station (Metric)								
Boring Bar Holder	C5-*CI-ST50-080045M Metric	C5	112	144	80	45	170	2
Turning Holder	C5-*CE-ST450-055080M Metric	C5	212	144	80	55	100	1
Boring Bar Holder	C6-*CI-ST50-080046M Metric	C6	122	144	80	46	171	2
SQT 28, 30 - 12 Station 12 Position / QT Nexus 300, 350M, 400, 450M; Slant Turn Nexus 500/550M								
Boring Bar Holder	C4-*CI-SQT30-175070M	C4	199	100	175	70	88	6
Turning Holder	C4-*CE-SQT30-060095	C4	174	100	95	60		4
Turning Holder	C4-*CE-SQT30-060140M	C4	174	100	140	60		4
Turning Holder	C4-*CE-SQT30-036140M	C4	150	100	140	39		4
Turning Holder	C5-*CE-SQT30-052130M	C5	174	100	130	52		4
Boring Bar Holder	C6-*CI-SQT30-175074M	C6	217	106	175	74	119	6
Turning Holder	C6-*CE-SQT30-055125M	C6	182	106	125	55		7

Part	Product Code	Size	Dimensions (mm)							Type
			b ₂	h ₂	l _{1x}	l _{1z}	l _{2z}	l ₂	l ₂₁	
SQT 28, 30 - 12 Station 12 Position; QT Nexus 300, 350M, 400, 450M; Slant Turn Nexus 500/550M continued										
Turning Holder - Sub Spindle	C5-*CE-SQT30-100130M SS	C5	197	100	130		100			7
Double Turning Holder	C5-*CE-SQT30-000130M DT	C5	216	100	130	52	100			8
Boring Bar Holder	C5-*CI-SQT30-175073M	C5	207	90	175	73		118		6
Boring Bar Holder - Sub Spindle	C5-*CI-SQT30-180043M SS	C5	212	100	180		43	103	60	5
Boring Bar Holder	C6-*CI-SQT30-175074M	C6	217	106	175	74		119		6
Turning Holder	C6-*CE-SQT30-055125M	C6	182	106	125	55				4
QT Nexus II series 100M/MS/MY/MSY 12S; QT Nexus II series 200M, 250M/MS/MY/MSY 16S; SQT100M/MS/MY/MSY 12S, SQT 200M, 250M 16S; SQT 10 12S										
Turning Holder - for grooving tool	C4-*CE-SQT10-062070M	C4	169	76	70	62				4
Turning Holder	C4-*CE-SQT10-045090M	C4	151	76	90	45				4
Turning holder - Sub Spindle	C4-*CE-SQT10-063090M SS	C4	137	76	90		63			7
Double Turning Holder	C4-*CE-SQT10-000090M DT	C4	156	76	90	45	63			8
Boring Bar Holder	C4-*CI-SQT10-110061M	C4	134	76	110	61		88	27	6
Boring Holder - Sub Spindle	C4-*CI-SQT10-110015M SS	C4	134	76	110		15	88	73	5
SQT 15, 18, 200M, 250M - 12 Station, 12 Position; QT Nexus 200, 250M/MS/MSY										
Turning Holder	C3-*CE-SQT250-061098M	C3	165	84	98	61				4
Turning Holder - for grooving tool	C4-*CE-SQT250-062070M	C4	172	84	70	62				4
Turning Holder	C4-*CE-SQT250-061099M	C4	170	84	99	61				4
Turning Holder - Sub spindle	C4-*CE-SQT250-058099M SS	C4	140	84	99		58			7
Double Turn Holder	C4-*CE-SQT250-000099M DT	C4	174	84	100	68	58			8
Boring Bar Holder	C3-*CI-SQT250-140076M	C3	159	84	140	76		88		6
Boring Bar Holder	C4-*CI-SQT250-140076M	C4	164	84	140	76		89	13	6
Boring Bar Holder - Sub spindle	C4-*CI-SQT250-140020M SS	C4	164	84	140		20	90	70	5
Turning Holder	C5-*CE-SQT250-061102M	C5	178	84	102	61				4
Turning Holder - Sub spindle	C5-*CE-SQT250-050102M SS	C5	140	84	102		50			7
Double Turn Holder	C5-*CE-SQT250-000102M DT	C5	176	84	102	61	51			8
Boring Bar Holder	C5-*CI-SQT250-140079M	C5	172	84	140	79		103	24	6
Boring Bar Holder - Sub spindle	C5-*CI-SQT250-140023M SS	C5	172	84	140		23	103	80	5
Multiplex 410, 610, 4100, 6100 - 12 Station, 12 Position, 6200Y - 16 Station, 16 Position										
Turning Holder	C4-*CE-MZ610-063090M	C4	141	76	90		63			
Boring Holder	C4-*CI-MZ610-120030M	C4	144	76	120		30	88	58	5

Part	Product Code	Size	Dimensions (mm)							Type
			b ₂	h ₂	l _{1X}	l _{1Z}	l _{2Z}	l ₂	l ₂₁	
Multiplex 6200, 6200Y, 4200 - 12S 12P, 6250, 625, 425 - 12S, 12P, 420, 620 (External Only) - 12 Station, 12 Position										
Turning Holder	C4-*CE-MZ6200-063100M	C4	128	84	100		63			7
Turning Holder	C5-*CE-MZ6200-055100M	C5	137	84	100		55			7
Boring Holder	C4-*CI-MZ6200-150018M	C4	174	84	150		18	88	70	5
Boring Holder	C5-*CI-MZ6200-150033M	C5	182	84	150		33	103	70	5
Multiplex 420, 620 - 12 Station, 12 Position										
Boring Holder	C4-*CI-MZ620-140018M	C4	164	84	140		18	88	70	4
Boring Holder	C5-*CI-MZ620-140033M	C5	172	84	140		33	103	70	4
Multiplex 430, 630, 650, 4300, 6300 - 12 Station, 12 Position										
Boring Holder	C4-*CI-MZ630-190037M	C4	214	100	190		37	100	63	5
Turning Holder	C4-*CE-MZ630-090127M	C4	177	100	127		90			7
Turning Holder	C5-*CE-MZ630-090130M	C5	185	100	130		90			7
Boring Holder	C5-*CI-MZ630-190040M	C5	222	100	190		40	103	63	5
Turning Holder - Multiplex 650 only	C5-*CE-MZ650-116166M	C5	228	150	166	116				4
Boring Holder	C6-*CI-MZ6300-185050M	C6	227	100	185		50	118	68	5
Integrex 200-III/IV (T/ST), 300-III/IV (T/ST), 400-III/IV (T/ST)										
Boring Bar Holder	C4-*CI-IG200-035024	C4	59	89	35	24		86		2
IVS200										
Boring Bar Holder	C5-*CI-IVS200-033040	C5	72	100	40	33		91		2
IVS400										
Facing Holder	MZK9180	C4	144	130	53	30		91		1
Turning Holder	MZK9181	C4	144	130	53	30		91		1
Cybertech Turn 4500M, 4500MT - Upper Turret										
Boring Holder - Medium reach	C6-*CI-CT4500M-079090	C6	121	142	79	90		237		9
Turning Holder	C6-*CE-CT4500M-043074	C6	160	144	74	43		159		10
Boring Bar Holder	C6-*CI-CT4500M-079155	C6	121,3	144	79,25	155		327		9
Boring Bar Holder	C8-*CI-CT4500M-051059	C8	176	144	59,25	51		144,3		10

Part	Product Code	Size	Dimensions (mm)						Type	
			b ₂	h ₂	l _{1X}	l _{1Z}	l _{2Z}	l ₂		l ₂₁
Hyper Quadrex 100MSY/150MSY										
Turning Holder A & B	C4-*CE-MZ610-063090M	C4	141	76	90	63				7
Hyper Quadrex 200MSY										
Turning Holder A & B	C4-*CE-MZ6200-063100M	C4	128	84	100	63				7
Boring Bar Holder A	C4-*CE-MZ6200-150018M	C4	175	84	150	18				5
Turning Holder A & B	C5-*CE-MZ620-055100M	C5	137	84	100	55				7
Boring Bar Holder A	C5-*CI-MZ620-150033M	C5	152	90	150	33				5
Hyper Quadrex 450M Lower Turret										
Boring Bar Holder	C6-*CI-HQR450ML-080000	C6	122	145	80	0		105		2

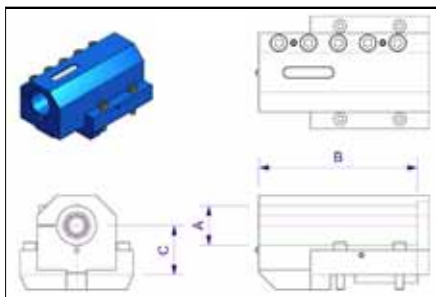
If you can't find the toolholder you are looking for, please contact your local Seco representative as it is possible that we have the solution you require.

Preseters

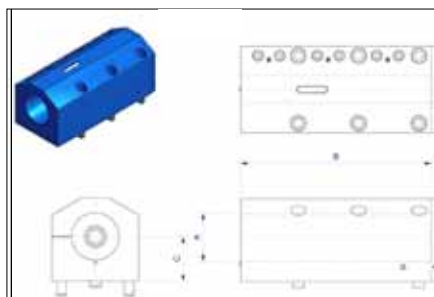
Product Code	Size	Dimensions (mm)
		l ₁
C3-NCI-ISO50-000089	C3	89
C4-NCI-ISO40-000090	C4	90
C4-NCI-ISO50-000090	C4	90
C5-NCI-ISO50-000100	C5	100
C6-NCI-ISO50-000130	C6	130
C8-NCI-ISO50-000115	C8	115
C8-NCI-ISO50-000150	C8	147



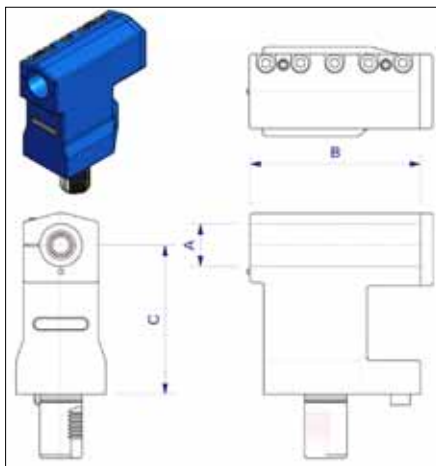
SPLIT BORING BAR HOLDERS



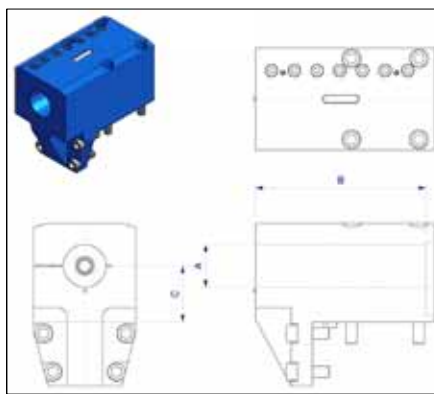
Type 1



Type 3



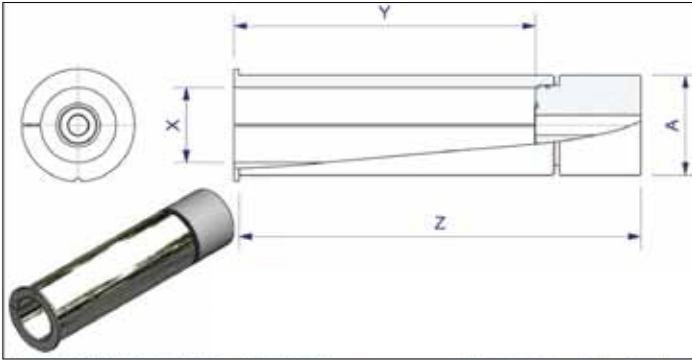
Type 2



Type 4

Mazak - Metric Range		A	B	C	Type
Quick Turn 15, 18, 20, 200 Dual Turn 20 8 Station, 8 Position QT Nexus 150/200/250/300/350 SQT 200, 250 12 Station, 12 Position	SB40-QTN150-050	40	160	50	1
SQT 15, 18, 200M, 250M 12 Station, 12 Position QT Nexus 200/250M, MS, MSY	SB40-QTN200M-140	40	160	140	2
SQT 28, 30, 300 12 Station, 12 Position QT Nexus 300/350M QT Nexus 400/450M	SB50-QTN300M-175	50	200	175	2
QT Nexus 400 / 450	SB50-QTN400-050	50	200	50	1
Slant Turn 50 & 450	SB80-ST50M-080	80	320	80	3
	SB50-ST50M-080	50	200	80	3
Slant Turn 60 & 80	SB80-ST60M-100	100	320	100	3
	SB100-ST60M-100	100	400	100	3
	SB60-ST60M-100	60	240	100	3
Cybertech Turn 4500M, 4500MT, Upper turret	SB60-CT4500-07925	60	240	79,25	4

REDUCING SLEEVE ASSEMBLIES



Benefits of the Reducing Sleeve Assembly

The same holder can clamp a range of boring bars by using reduction sleeves.

Features include:

- Combined captive spacer which maintains a 4 x diameter clamp length.
- Easy withdrawl of both sleeve and spacer.
- Assembly alignment notch.

Reducing Sleeve Assemblies - Metric Range		W	X	Y	Z
100mm - 80mm	SL100080	100	80	320	400
80mm - 60mm	SL080060	80	60	240	320
60mm - 50mm	SL060050	60	50	200	240
60mm - 40mm	SL060040	60	40	160	240
60mm - 32mm	SL060032	60	32	128	240
50mm - 40mm	SL050040	50	40	160	200
50mm - 32mm	SL050032	50	32	128	200
40mm - 32mm	SL040032	40	32	128	160

ARGENTINA Seco Tools Argentina S.A. Tel: +54 11 48 92 00 60 Fax: +54 11 47 23 86 00.
AUSTRALIA Seco Tools Australia Pty. Ltd. Tel: +61 2 96 76 22 79 (local tel: 1300 55 7326)
 Fax: +61 2 96 76 61 58 (local fax: 1300 65 7326). **AUSTRIA** Seco Tools Ges.m.b.H Tel: +43
 2253 210 40 Fax: +43 2253 210 4011. **BELARUS** Seco Tools Repoffice Tel: +375 17218 11
 69 Fax: +375 17 218 11 68. **BELGIUM** Seco Tools Benelux N.V./S.A. Tel: +32 2 389 09 60 Fax:
 +32 2 389 09 89. **BOSNIA** See Solvenia. **BRAZIL** Seco Tools Ind. e Com. Ltda. Tel: +55 15
 2101 86 00 Fax: +55 15 2101 8605. **BULGARIA** See Sweden. **CANADA** Seco Tools Canada
 Inc. Tel: +1 905 693 1780 Fax: +1 905 693 1788. **CHINA** Seco Tools (Shanghai) Co., Ltd. Tel:
 +86 21 54 26 55 00 Fax: +86 21 64 85 56 85. **COLOMBIA** Rexco Tools Tel: +57 1 269 5444
 Fax: +57 1 269 2395. **CROATIA** See Slovenia. **CZECH REPUBLIC** Seco Tools CZ s.r.o. Tel:
 +420 530 500 811 Fax: +420 530 500 810. **DENMARK** Seco Tools A/S Tel: +45 43 44 7600
 Fax: +45 43 44 5030. **FINLAND** Seco Tools OY Tel: +358 09 2511 7200 Fax: +358 09 2511
 7201. **FRANCE** Seco Tools France S.A. Tel: +33 2 48 67 27 27 Fax: +33 2 48 67 27 05, Seco
 EPB Tel: +33 3 88 71 38 89 Fax: +33 3 88 70 98 98, Seco Ets. Planche S.A. Tel: +33 4 74 83
 26 54 Fax: +33 4 74 83 26 59. **GERMANY** Seco Tools GmbH Tel: +49 211 240 10 Fax: +49
 211 240 12 75. **GREECE** Athens Mechanica Tel: +30 210 523 1284/5 Fax: +30 210 523 1286.
HUNGARY Seco Tools KFT. Tel: +36 1 267 6720 Fax: +36 1 267 6721. **INDIA** Seco Tools India
 (P) Ltd. Tel: +91 21 3766 7300 Fax: +91 21 3766 7410. **INDONESIA** Seco Tools (SEA) Pte Ltd.
 Tel: +62 21 7918 6441/6442 Fax: +62 21 7918 6440. **ITALY** Seco Tools Italia S.p.a. Tel: +39
 031 97 81 11 Fax: +39 031 97 85 91 (local fax: 840 000938). **JAPAN** Seco Tools Japan K.K.
 Tel: +81 3 37 33 81 11 Fax: +81 3 37 33 81 25. **MACEDONIA** See Slovenia. **MALAYSIA** Seco
 Tools Malaysia SDN. BHD Tel: +60 3 9059 1833 Fax: +60 3 9059 4833. **MEXICO** Seco Tools
 de Mexico Tel/Fax: +52 818 350 6311. **MONTENEGRO** See Slovenia. **NETHERLANDS** Seco
 Tools Benelux N.V. Tel: +31 183 63 66 00 Fax: +31 183 66 06 01, Seco Jabro Tools b.v. Tel: +31
 77 463 24 44 Fax: +31 77 463 14 54. **NEW ZEALAND** Seco Tools New Zealand Ltd. Tel: +64
 9 415 8441 Fax: +64 9 415 8442. **NORWAY** Seco Tools A/S Tel: +47 67 92 73 00 Fax: +47
 67 92 73 02. **PHILIPPINES** See Singapore. **POLAND** Seco Tools (Poland) Sp. z.o.o. Tel: +48
 22 637 5383 Fax: +48 22 637 5384. **PORTUGAL** Seco Tools Portugal, Lda. Tel: +351 256 371
 650 Fax: +351 256 371 659. **ROMANIA** Seco Tools Romania S.R.L. Tel: +40 268 414 723 Fax:
 +40 268 476 772. **RUSSIA** Seco Tools Russia Tel: +7 495 680 1322 Fax: +7 495 680 6241.
SERBIA Seco Tools SRB d.o.o Tel: +381 21 527 087 Fax: +381 21 527 093. **SINGAPORE**
 Seco Tools (SEA) Pte. Ltd. Tel: +65 68 41 28 02 Fax: +65 68 41 28 01. **SLOVAKIA** Seco Tools
 SK s.r.o. Tel: +421 33 551 3537 Fax: +421 33 551 3538. **SLOVENIA** Seco Tools SI d.o.o. Tel:
 +386 2 450 2340 Fax: +386 2 450 2341. **SOUTH AFRICA** Seco Tools South Africa (Pty.) Ltd.
 Tel: +27 11 362 2660 Fax: +27 11 362 1893. **SOUTH KOREA** Seco Tools Korea Ltd. Tel: +82
 41 622 9785 Fax: +82 41 622 0985. **SPAIN** Seco Tools España S.A. Tel: +34 93 474 5533
 Fax: +34 93 474 5550. **SWEDEN** Seco Tools AB Tel: +46 223 400 00 Fax: +46 223 718 60.
SWITZERLAND Seco Tools AG Tel: +41 32 332 78 78 Fax: +41 32 332 78 79. **TAIWAN** Seco
 Tools (SEA) Taiwan Tel: +886 2 26 57 79 18 Fax: +886 2 26 57 94 61. **THAILAND** Seco Tools
 (Thailand) Co. Ltd. Tel: +66 2 74 67 801 Fax: +66 2 74 67 802. **TURKEY** Seco Tools A.S. Tel:
 +90 216 569 74 00 Fax: +90 216 575 73 83. **UKRAINE** Seco Tools Ukraine Tel: +38 056 790
 05 44 Fax: +38 056 790 05 43. **UNITED KINGDOM** Seco Tools (U.K.) Ltd. Tel: +44 1789 76 43
 41 Fax: +44 1789 76 11 70. **USA** Seco Tools Inc. Tel: +1 248 528 5200 Fax: +1 248 528 5250.
VIETNAM Seco Tools (SEA) Pte. Ltd. Tel: +84 8 91 44 393/91 43 164 Fax: +84 8 91 43 164.



CRAFTSMAN TOOLS

Collaborating with the World's Finest

Craftsman Tools Ltd is a UK registered precision engineering company that specialises in toolholding and workholding solutions. The company is not associated in any way with Sears Roebuck or their range of Craftsman hand tools or lawn and garden products.



Seco Tools AB, 737 82 Fagersta, Sweden. Tel +46 223 400 00.
www.secotools.com